

PEACE FELLOWSHIP WOMEN PRESENTS

FAITH - FOOD - FUN - FELLOWSHIP



SATURDAY, FEBRUARY 18, 3:30 PM
MAKE THIS PLAQUE | DISCOVER STORY
BEHIND ST. PATRICK'S DAY

Bring finger food for snacks

Betty, 541.971.5060 or Cindy, 503.314.5119





SUPPLIES

Use what you have and be creative:

- Background: 2 pieces of chipboard or thin board, 1 piece slightly smaller for backing
- Focal Image: Square approx. 3"x3" cut from thin board or foam core board
- Scrapbook paper and other decorative paper
- Large popsicle stick or bone folder
- Paper clips or other small clips to hold paper down (optional)
- Ribbon: C45" 1-1/2-2" ribbon for bow on top + 1 ribbon for vertical side of plaque and 1 ribbon for horizontal side of plaque.
- Fishing wire or invisible thread and a needle
- Beads
- Spray glue or other adhesive
- Hot glue gun
- Scissors, optional: decorative scissors
- Stapler, duct tape or masking tape



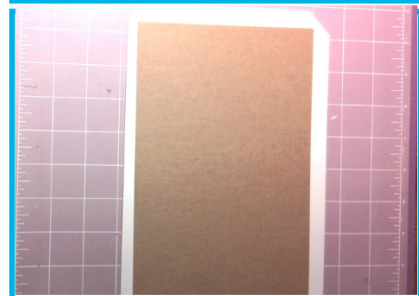
HOW TO MAKE A RIBBON PLAQUE



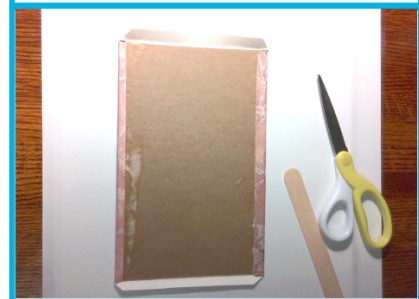
- 1** **BACKGROUND**
Glue scrapbook paper to board leaving 1/2" border on all sides.



- 2** Miter edges of paper
-cut corners at 45 degree angle, leaving space to fold over board (approx. 1/4"). Glue down long sides. Use warm iron to help hold in place if needed.



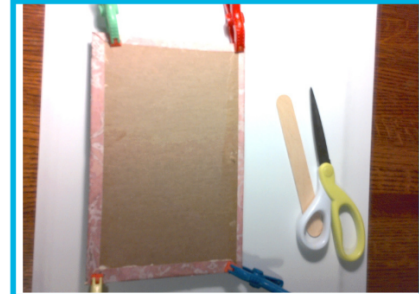
- 3** Miter edges of paper, cont.
Fold over short sides. Adjust or cut corners, tucking in as needed to form the angle. Glue in place.



4

Miter edges of paper, cont.

Glue adjusted corners in place and secure with clips if needed. Smooth with popsicle stick or bone folder.



5

Lay out horizontal and vertical ribbons. Attach to back of plaque with hot glue gun or tape.



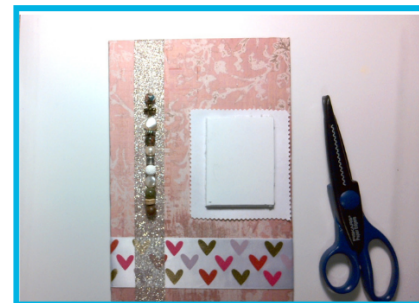
6

Sew or tape and hot glue thread to top of plaque. string beads on thread. Hold taught and sew or tape and hot glue to bottom of plaque.



7

Trim focal image as desired then adhere to small square/rectangle plywood or foam core board. Leave an overhang of 1/4" to 1/2" on all sides.



8 Hot glue focal image to plaque. Embellish with flowers, found objects, buttons, or whatever is available.



9 Make a bow and attach to board with hot glue.



10 Embellish as desired. Display on plate easel.





